



2015 Annual Report

Our Mission

New Zealand will optimise quality of life for people with cystic fibrosis and their families – striving for normal life expectancy

Vision

Lives Unlimited by Cystic Fibrosis

Values

Passionate Engagement

Knowledge is Power

Creating Community

Innovative

Contents

Our People

Chairperson's Report

Chief Executive Report

Farewells

Mark Ashford Scholarship

CF Achievers' Awards

Branch Reports

Special Events Photo Gallery

Acknowledgements

Financial Statements

Our People

Board

Jane Drumm – Chairperson
John Parsons
Margaret Nicholls
Cheryl Moffat
Kim McGuinness
Denis Currie – President
Carmen Shank – Co-Adult Representative

Staff

Belinda Burnett – Chief Executive
Julie Clemett – Administration Manager
Susan Lovelock – Southern Region Field Worker
Melinda Coombes – Northern Region Field Worker
Vicky Tyler – National Information Coordinator
Hannah Wilson – Grants and Events Coordinator

Investment Committee

John Parsons – Chairperson
Steve Drumm
James Lee
Belinda Burnett
Julie Clemett - Administrator

Clinical Advisory Panel

Dr Richard Laing – Chairman Chest Specialist, Christchurch Hospital
Dr Cass Byrnes – Paediatrician, Starship Children’s Hospital
Dr Philip Pattermore – Paediatrician, Christchurch Hospital
Dr Mark O’Carroll – Chest Specialist, Auckland Hospital
Dr Peter McIlroy – Paediatrician, Nelson Hospital
Rebecca Scoones – Physiotherapist, Starship Children’s Hospital
Vivienne Isles – Children’s Outreach Nurse, Christchurch Hospital
Victoria Crowder – Dietician, Christchurch Hospital

CFNZ Chairperson's Report 2015

CFNZ's mission is to optimise quality of life for people with cystic fibrosis and their families – striving for normal life expectancy. With our “small body of determined spirits” we work “together as one – creating better tomorrows”.

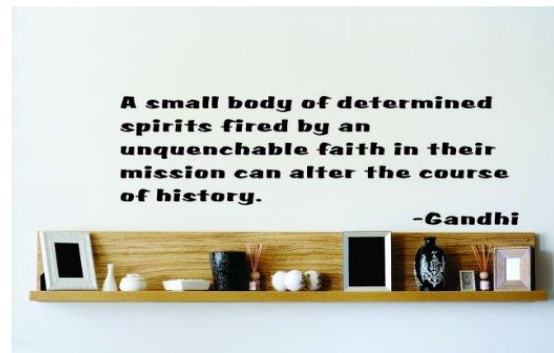
In the last year CFNZ has undergone considerable change, taken advantage of new opportunities and consolidated in areas where we have always shown strength.

Sustainability for CFNZ is and will continue to be a major challenge as we look forward. 2014/15 has been a time of considerable change. Our CE has employed new staff and reorganised existing responsibilities, this has strengthened the team as we now look forward.

The CFNZ office in Auckland is now fully operational and the Board looks forward to the opportunity that will come from having a presence in Auckland, a convenient location – so close to Auckland Hospital and our proximity to other Auckland based Not-for-Profits.

The CFNZ Annual Conference held in May this year had a major transformation of format, content and method of organising and, as a result, has had a pleasing and considerable upturn in involvement and attendance.

One opportunity for CFNZ this year has been aligning with Kiwifirst who now market and fundraise for CFNZ. The arrangement with Kiwifirst is advantageous in two ways; not only are much-needed funds generated, our CF community is well profiled through a marketing campaign and as a result CFNZ



becomes more well known throughout NZ. The Board is very pleased with this new relationship and the stability the funds raised will ensure.

The Board itself has been in a consolidation mode this year. We welcomed two new Board members who replaced two experienced Board members, although being thrown into the strategic planning process almost immediately was a challenge they both handled it very well. CFNZ now has a newly adopted three-year Strategic Plan that is currently being implemented, our Constitution has been reviewed and updated, and our Policy Document is currently undergoing a review and update process.

Financially 2014/15 has been challenging for CFNZ and we have a significant deficit this year. The Board has had to make the difficult decision to sell some of our share assets to ensure cash flow, as we now have little in the way of cash reserves. CFNZ does have financial security and a good asset base and the Board and management will monitor these closely.

Newly introduced initiatives such as; our relationship with Kiwifirst, employment of our Grants and Events Coordinator, capitalising on sponsorships; for example our relationship with Choice Hotels and streamlining the management of events,

have already begun to lead to an increased generation of funds. This will begin to address the risky financial situation that has been building over the last six-seven years following the 2009 Global Financial Crisis. Obviously, sustainability and continuing to serve our CF community is of primary significance to CFNZ.

Another major challenge the Board has identified is in seeking equity for all PWCF around NZ. There is such a lot of variation in treatments, access to equipment, even wide variations in what assistance is provided by CFNZ Branches. It is our aim that even though there will be difference area by area due to geography, DHBs and need, it is our aim that the base level of support will be fundamentally the same. Ensuring the support required is in place will require re-establishing the Clinical Advisory Panel, making sure that the Adult Representation on the Board is strengthened, and most importantly ensuring that CFNZ and the Branches are on the same page and working from the same book particularly with regard to welfare and support. This work has been started and will continue to be the priority

for the Board, Branches and the Management team as we move forward. On behalf of the Board, I take this opportunity to thank all the staff for their hard work over this last year and most especially our CE Belinda Burnett, who has had a first year that has been very full and at times challenging. There have been many changes and that is not always easy. The team has performed very well, with the best interests of the CF community at heart and we are very grateful to you all.

I would also like to extend our grateful thanks to Kiwifirst, Choice Hotels and all our other supporters who have championed CFNZ, your commitment and support is very much appreciated.

Thanks to our President Denis Currie, Board members, Branch committees and to all CFNZ volunteers. To those who are thinking of joining a branch committee or volunteering in some way I encourage you to join our “small body of determined spirits fired by an unquenchable faith in our mission” as CFNZ fights for optimal quality of life for PWCF throughout NZ.

Jane Drumm, CFNZ Board Chair

CEO Report 2015

Carrying on Jane's theme of change, I will start my report with a quote that is often used in the context of a Not-for-Profit organisation:

“Never doubt that a small group of thoughtful, committed citizens can change the world. Indeed, it is the only thing that ever has” – Margaret Mead

With this in mind I would like to express my gratitude to the following people –

The Board who have represented the members throughout the past year:

Jane Drumm - Chair

John Parsons – Finances

Margaret Nicholls, Kim McGuinness, Cheryl Moffat, Chloe Mackie & Carmen Bradstreet Shanks.

Their stewardship and common sense approach to the issues of governing a non-government organisation have made managing this role an enjoyable and worthwhile endeavour.

I was fortunate enough to meet many of you at the National Conference in May. Trying things a little differently isn't always successful, however I'm pleased to report that the May conference received overwhelmingly positive feedback. I share this accolade with the Conference planning committee: Jane Drumm, Sue Lovelock, Robyn Beach, and Anna Scoullar-Jones. Their enthusiasm and innovative ideas contributed toward the success of the event.

Jane mentions the special relationship we have with Kiwifirst and Choice Hotels.

These two companies have helped enormously toward the increase of “untagged” funds for CFNZ. Maintaining the relationship with them and ensuring that we continue to have a ‘happy marriage’ is one part of my role that gives me great pleasure. These companies continually display a real and genuine empathy with CFNZ.

The successful national events – Charity Cricket, Challenge Wanaka and the National raffle could not happen without the harmonious unity of staff and volunteers. A special mention to Nicky Churton who stepped in and gave generously of her time to ensure that the Charity Cricket in December 2014 went ahead. With Nicky's help the event not only happened but had the largest financial return in recent history.

The staff employed by CFNZ bring expertise and humour to a sometimes challenging environment to work in. They have supported me in my position and given 150 percent each and every day. Their commitment to CFNZ and its members is an admirable and invaluable quality to have.

While we are not yet able to cure CF we can (and do) strive to improve the quality of life for people with CF through our programmes such as Breath4CF and our educational awards. It was an honour and a privilege to present this year's Mark Ashford Scholarship to Vaughan Somerville.

I believe the updating of CF News and the introduction of the monthly “Panui” (CFNZ electronic newsletter) has assisted in improving communications between the

national office and the branches. We have received some great coverage this year – in newspapers, magazines, websites and radio. Each time our message is heard or CFNZ is mentioned it extends the reach of our organisation just a little bit further.

The highlight of this year for me has been the acceptance from Capital & Coast DHB that a paediatric nurse is needed. The positions description for this role is being developed and I aim to report that a nurse is in position before the end of the calendar year.

The assurance from the MOH that they will not relinquish their funding toward CFNZ before the DHBs take over the responsibility

ensures we have security of funds until this issue is resolved.

The willingness of the Branches to examine the inequitable care and services for PWCF throughout the country – both within DHB areas and in the regions. We are working together to solve this issue with a revised “Welfare Policy” that is fair for all PWCF regardless of where they live.

Finally, I would like to express my gratitude for all the volunteers who give so much of their time to assist in promoting fundraising and awareness campaigns for our extremely worthwhile cause.

Belinda Burnett, CFNZ Chief Executive

Farewells

Alana White	07/08/1970 – 18/07/2014	Northland
Richard Sutton	16/08/1964 – 26/07/2014	Otago
Kenneth O’Sullivan	17/05/1988 – 07/08/2014	Waikato
Michelle Walsh	11/06/1973 – 15/12/2014	Auckland
Jonathan Nicholls	21/05/1983 – 10/03/2015	Wellington
Ngaroimata Winiata	19/11/1967 – 23/03/2015	Auckland
Dylan York	11/02/1991 – 19/04/2015	Hawke’s Bay
Reece Brown	20/03/1991 – 26/04/2015	Central Districts
Jasper Thomas	22/09/1995 – 06/06/2015	Waikato

*“No person is every truly alone.
Those who live no more, whom we
loved, Echo still within our thoughts,
our words, our hearts.”*

Richard Fife

Mark Ashford Scholarship

The Mark Ashford Scholarship is awarded to the person with CF who has attained the highest standard in his or her tertiary education for that year. It is sponsored by Pink Batts – part of the Fletcher Group in memory of Mark Ashford who worked for the Group and made a huge contribution to their Healthy Homes book.



Winner 2015 – Vaughan Somerville

Vaughan Somerville is the 19th recipient of the Mark Ashford Scholarship after he graduated from Auckland University with a first-class honours degree in medical science.

Vaughan was presented the 2015 Scholarship at a function held at the Cystic Fibrosis Auckland Branch office. He completed his Bachelor of Medical Science last year. He's now studying law and working towards his PhD.

Vaughan plans use his \$3000 Scholarship to help pay for his student fees and for a research project in sport and nutrition for his PhD. "I want to go into sporting research and product design – research into nutrition for sports people."

Originally Vaughan entered medical school, wanting to become a doctor. But having CF meant he had to change his career path. "After discussions with the faculty I realised that it wasn't going to be possible to balance the two so I had to look to change degrees," he explains.

At the award presentation, Mark's widow, Kathryn Ashford, spoke of how happy her late husband would be to see his legacy live on. "I'm just happy that the award has gone to someone who is in the medical field, and the advances that have gone on in CF are just amazing," she said.

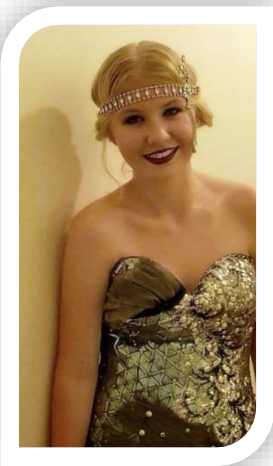
"Mark would be so happy to see that his name has lived on, for me, and for Jill his mum."

Next year marks the 20th anniversary of the Mark Ashford Scholarship and a committee has been established to decide how to commemorate it.

CF Achievers' Awards

The CF Achievers' Awards for 2015 saw four young people receive a total of \$3500 to mark their success in a wide range of endeavours.

The Awards, sponsored by Mylan, distributors of Creon products, aim to recognise the remarkable achievements that people with CF can make despite adversity.



Maddison (16) – Achievement in Education

Spending half the school year in hospital didn't stop Pahiatua student Maddison passing in her Level One NCEA exam with merit.

Her top marks, despite ill health, earned Maddison a CF Achiever's Award in education.

Maddison, of Tararua College sat all her NCEA exams in Starship Hospital in Auckland with a hospital teacher sitting in her room during the exam with no one else allowed to enter.



Jemma (25) – Achievement in Sport

Jemma started playing netball when she was just seven and is still going strong at the same club 18 years later.

What started as a hobby at her local netball club, Waiaupa, south of Auckland, is now something that has earned Jemma a CF Achiever's Award, and also plays a vital role in helping to keep her well.

Playing at senior level can be quite challenging but also lots of fun, says Jemma.

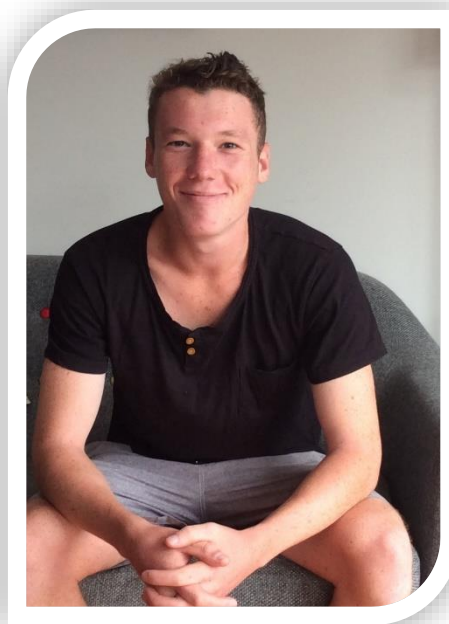
"I've stayed with my local club the whole time. I've moved upwards and there are completely different faces every year."

Sam (17) – Achievement in the Arts

A natural performer, Sam has been entertaining his family and friends for years, and his recent success in the dramatic arts has led to him being granted a CF Achiever's Award in Art.

Sam has always been interested in performing, playing drums and acting since primary school, with a particular penchant for comedy.

Since taking up drama in Year 12 he has shown a real talent and passion for acting. Over the last two years he has created and performed several short plays on stage, taken a leading role in the school musical and taken part in the Sheilah Winn Shakespeare Festival in Wellington. Sam is auditioning to attend drama school next year.



Kelea (10) Achievement in the Arts

Dancing since the age of five, Kelea of Auckland, now attends four different dance classes, recently passing her Grade 3 Royal Academy of Dance exam with distinction.

She is committed to attending her five hours of after-school classes each week, even when she could do with a rest. This is on top of her physio twice daily.

Kelea's first love is ballet but since starting to learn she has added three other genre's to her bow – jazz, tap and musical theatre.

Kelea wants to use her grant to either attend International Summer School of Dance in Sydney or to start learning how to play the piano.

Well done to all these inspirational young people whose strength and determination is typical of so many PWCF.

Branch Reports

NORTHLAND

The highlight for Northland Branch was our annual charity golf tournament in March. We raised \$10,000 from the event, and had support from Whangarei businesses including LJ Hooker and OfficeMax to name a few – and from some of New Zealand’s reality television stars.

One of the original organisers of our tournament, Aaron Gasgoine, who appeared on My Kitchen Rules NZ as one of the Corporate Dads, cooked fish for all the teams that entered, and we were also entertained on the course by the band Co-lab, which had been on X-Factor.

However, we didn’t raise as much money this year because we had fewer teams competing, and losing the Millwaters to Wanaka meant it was harder to organise prizes.

Mitre 10 Mega’s Ladies Night was a success and our branch received \$3,500 from this evening.

We use funds raised from this event and the charity golf tournament to meet requests for assistance from our local families. We are also planning to make a financial contribution to National Office this year.

We do intend to hold another golf tournament in 2016, which has pretty much become our Awareness Week. We have only six CF families in the region now. The tournament remains a popular event in Northland and does still bring in a significant amount of funding for our branch.

To summarise it has been a steady year for Northland – we are looking forward to 2016.

Mike Webb, Northland Chairperson

AUCKLAND

It’s been a particularly eventful year for Cystic Fibrosis Auckland – starting the year off with getting settled into our new office in Grafton, opposite Auckland Hospital.

The office is a much nicer space than our former premises and we’re finding it very central for people to drop in when the need arises.

Auckland Branch has had another successful year with obtaining grants. We have been able to buy new office furniture, purchase a data projector, equipment, and send members to the National Conference in Wellington. We were also able to provide microwave sterilisers for Central Districts Branch for their PWCF.

We have held two courses from The Parenting Place at the Auckland Branch for parents of children in the middle years and teenage years, and received positive feedback from those who attended.

Our Awareness Week raised \$26,500 and we hosted a few fun events throughout the year including a Dads' Happy Hour at a pub, and a Christmas Heirloom evening which was very entertaining and raised \$425 for the branch. Two Sileni wine fundraisers raised \$2000, and we were delighted to get \$3000 from three Z Energy Service Stations for Good in the Hood, with CF Auckland winning the most tokens at the Botany Downs Service Station. We also formed good relationships from this programme, with Z Energy helping to fundraise for us during our Awareness Week in 2015.

This year we began an electronic newsletter to replace our printed Auckland Cystic Fibrosis community newsletter. The Auckland Branch E-News was launched in November and is emailed out monthly. This form of communication is cost effective in its production and distribution.

Our ongoing meetings with the CF Adult Medical team have proved beneficial.

The Auckland Branch Coordinator resigned in May, and it has been heart-warming to see how the committee have stepped up and taken on extra tasks to get through this busy time.

Sadly Anthea Wendelborn resigned at the Auckland Branch AGM – Anthea has put a lot of time, energy and enthusiasm into the Auckland Branch especially as Co-Chairperson but we are fortunate that she is staying on the committee and will help where she can. Sally Sprosen and Amanda Blakey have stepped down from making grant applications after some years of doing a terrific job with an impressive strike rate. Fortunately, we have another couple who have taken on this role and are keen to keep the momentum going.

Once again, we couldn't have maintained the support we provide to our CF community if it wasn't for the tireless work of our committee and volunteers so I extend a heartfelt thank you to them all.

Jill Thorrat, Auckland Chairperson

WAIKATO

Firstly I would like to thank Jenna and Janelle once again this year for their support and hard work for the branch.

It has been a difficult year for us as a branch with personal loss and unwell children, but we have managed to keep the branch going and have the support there for our PWCF.

We have been successful in obtaining a grant for \$1600 for electric sterilisers from The Lion Foundation. Three Lions Clubs have given donations, and three schools have supported us through awareness and donations.

One of our AWCF donated a photo shoot which was auctioned off on Trade Me. Some of our Mums and supporters did the Mud Challenge and raised funds for Waikato CF. Chocolate fish were sold again this year, however sales were slow and we will not be purchasing as many next year.

We have had three newly diagnosed this year, and we have contacted their families and sent packs.

We have provided a lot of welfare support for our families, which is an area of great importance to us as a committee.

Entertainment Books were sold again and sales are up on previous years, thanks to our great team of sellers.

It is with regret that we must farewell Janelle Rumney, our secretary who is stepping down from the role. Thank you Janelle for taking on this position and ensuring the newsletter is sent out. Janelle will still be making up our hospital packs for paediatrics.

We are looking forward to some new faces and energy from new members over the next year. Thank you to all who have helped CF Waikato in the past year.

Mike and Debbie Wood, Waikato Co-Chairs

BAY OF PLENTY

The Bay of Plenty Branch did not have much planned at the beginning of the 2014/15 year. By the end of the financial year we had enough funds to seriously start to move forward with our dream to have a community physiotherapy service.

We had a very generous donation from C3 and the icing on the cake was being chosen to be one of the recipient charities for the 20th Police CIB charity which is an annual auction/lunch held in Tauranga. As this was the last auction from the dedicated team who organise it each year it promised to be a big one, which it was. Over \$400,000 was raised with BOP CF receiving \$30,000. So along with money previously allocated we have ended the year with a proposal being put to the Bay of Plenty DHB to work with them to provide a community physiotherapy service for our local residents with CF.

Once again we are grateful to Pub Charity and The Lion Foundation for grants that enable a considerable number of us to attend the annual CF Conference in Wellington. It was a valuable experience for all, with most of our attendees attending for the first time.

The Southern Trust has been very generous in granting us money for nebulisers for which we thank them as it is becoming increasingly harder to get funding.

We have welcomed a number of new families this year, but sadly we have also farewelled some of our CF family. I am continually encouraged by the Adults with CF in our community

that are giving life 100% and I thank those of you who are happy to be out in the public eye as you are an inspiration and encouragement for our children.

Nicola Wakerley, Bay of Plenty Chairperson

TARANAKI

This year we had fresh energy introduced into our committee with the elections of Nicola McCarthy, Natalie Ropotini, Katrina Turner and Shirani Smith. All these people contributed to our branch. With Nicola and Natalie on board, we finally have representation for our paediatrics on the committee. Shirani while unable to attend meetings helped us liaise between our members and the medical staff. Katrina gave us another Adult with CF and lung transplant recipient perspective. Katrina, David and Jodie as Adults with CF bring invaluable knowledge and insight to the committee.

Changes to the demographics of our membership:

- Two families have returned from a period outside the region.
- Two members have transitioned from paediatrics to Adults and another is going through this process.
- And one Adult has recently left for another region.

At the last AGM we recognised a need to improve communication with our members, the national office and clinical teams to better serve our members' needs. I think we are well on the way to achieving this: the contacts list has been updated, Nicola has been sending out regular newsletters, and there have been several ring-arounds due to the increased activity. I have participated in most of the monthly Branch Chair teleconference meetings.

As a result, we have become aware of a number of welfare needs within our community that we are working through in conjunction with the Fieldworker and the TDHB Social Worker. We also chose to provide our members across the board with a welfare grant of \$400 to assist with costs of keeping warm and dry in winter. This has led to a number of communications between the branch and National regarding welfare policy and the role of our Field Worker.

At the National Chairpersons' Conference I attended last October, it was clear that there was some confusion over the role of the National Fieldworkers employed by CFNZ and the branches. In Taranaki we have found there has been some crossover and misunderstandings occurring within these roles.

Clarification from National has brought to our attention a proposed new Welfare Policy which was discussed at National Conference in May, with the intention of ratifying this at the next Chairpersons' Conference in September this year. Some of this proposed policy goes against the philosophy of our branch. It is my belief that the incoming committee should continue to work with National to resolve differences.

Besides assisting with welfare support and providing equipment such as nebulisers to our members, there are a number of initiatives and activities that have kept us busy throughout the year.

Belinda Burnett the new CEO visited Taranaki Branch in August. An open meeting was held at Taranaki Base Hospital which was attended by most committee members and some TDHB clinical staff.

We purchased a pressure gauge to be held by the Physio Department at Taranaki Base Hospital. This can be used to check our members' nebulisers if they are brought to clinic. Nicola has created a database of items that our members have suggested we can purchase to create "Boredom Buster" packages when people are in hospital. The first packages have been distributed this year and have been well received.

We were well represented at this year's conference. We funded registration and accommodation for five of our members. (With the accommodation costs ultimately being covered by funds from a grant obtained by Auckland Branch and generously donated to our branch).

There were a number of successful fundraisers which also raised awareness in the community:

- The Street Appeal which included a stall at the Farmers' Market organised by myself and Joan.
- Afternoon Tea during the Powerco Garden Extravaganza organised by Puketapu Lionesses (from whom we have had support for many years).
- A quiz night at The Good Home organised by Jodie.
- Field of Corn organised by Nicola.
- Chocolate fish sales – another consignment is due to arrive soon.

In summary, there have been some difficult issues around welfare policy and constitution changes, and there have been many highlights.

One of these was having our Paediatrician, John Doran, spend an afternoon in Hawera with us picking corn – showing true dedication beyond the call of duty: Something that could be said of every member of our outgoing committee who have worked hard and been proactive in achieving our goals. Everyone has made an active contribution to improving the lot of our members.

I will not be standing again as the Chair so I would like to conclude by thanking the committee and wishing the new committee all the best for the coming year.

Shelley Gruchy, Taranaki Chairperson

HAWKES BAY

Once again this year meetings have been on the light side. We have used emails to get committee votes for any urgent payments that have been requested.

Claire has approached Staples Rodway and we are their charity for the up-coming annual run.

Our Physio in Homes programme is working well and we are using funds from past fundraising efforts. We must be mindful that these funds will need to be topped up so that we can continue this, as well as providing our members with other welfare needs.

This Awareness Week Katherine Rusby once again helped organise the Casino/Auction night which raised over \$11,000.

This year our paediatric CF nurse Meg retired after many years of working with our children and their families, and we now have Nora who is learning the ropes. We helped her attend the conference in Australia so that she can build up a network of other medical professionals. We also helped members to attend our National Conference in Wellington.

This is my last Chairperson's report. I have enjoyed the challenges and the amazing friendship from the other Chairs.

Glenda Sinden, Hawkes Bay Chairperson

CENTRAL DISTRICTS

Central Districts has gained a committee member this year, a keen new parent, pushing our numbers to five. We are still managing to attend regular meetings despite our geographical issues. We are able to do this without touching on branch funds too much with the help of BP who gave us \$200 worth of vouchers.

We attained our goal of bringing more branch members to conference this year, with six attending (twice as many as last year). Unfortunately, we failed to secure any grants this time but are very thankful to Nelson Branch which helped us out financially so we could all go. It's wonderful when we can step up and help each other this way.

Our fundraising this year has been fairly quiet, with continued chocolate fish sales year round, and a couple of donation boxes permanently placed in Wanganui businesses. Anna wrote a Facebook post about CF that garnered unexpected donations at one point. In October we are holding another of our popular Ballentynes Summer Fashion Shows. They practically run themselves now, with more offers to model than we need – this will be our sixth show in five years. Last year we had high hopes our Mayor would model for us but she sent a substitute at the last minute – this year hopefully we'll have her – great for publicity and awareness!

Great team work with Melinda, and Auckland Branch which has been very generous, helping us out with several microwave sterilisers for our PWCF who need them. Our branch funds are at an all-time low so this news was received very gratefully indeed.

Anna Scoullar-Jones, Central Districts Chairperson

WELLINGTON

Wellington Branch has enjoyed a busy and successful year supporting its members and raising awareness of CF. We continue to have a small, dedicated committee.

We provided funds for over 40 people to attend the CFNZ Conference. We also continue to provide equipment, Breath4CF top-ups, hospital voucher packs, half-price hospital parking, assistance with winter power bills, babysitting costs to attend CF events, welfare payments and more.

Kim McGuinness has focused on paediatrics and continues to lobby for a CF Nurse, Nicole Doriguzzi has focused on the Adults and administration including sending regular newsletters to update the branch on what is happening with CF Wellington.

CQ Hotel Cuba St Wellington has continued to be an amazing support to the branch with fundraisers and donations of bikes. Many other organisations have also contributed to the success of the branch over the past 12 months. Appeal Week 2014 was successful at raising awareness and funds.

A small number of successful networking events were held throughout the year for families, including a few family events, drinks evenings to coincide with Fieldworker visits, the Xmas Tree Festival gala opening, and our end of year social. We have also just been nominated for the 2015 Wellington Airport Community Awards for services to our community.

Our 2014 Christmas Tree Festival was a roaring success with an incredible \$15,000 raised, this year we are set to exceed that with the location being confirmed as the Wellington Airport.

We hope over the next year we are able to continue working closely with Wellington Hospital to improve relationships, and quality of services provided with a focus on lobbying for a CF Nurse.

The branch is very sad to lose Jonathan Nicholls who was the son of one of our longest-serving committee members, Margaret Nicholls.

Kim McGuinness & Nicole Doriguzzi, Wellington Co-Chairs

NELSON

It has been nice to have two new families make themselves known to us in the region and join in a social event with the group. These annual or bi-annual events are invaluable and we hope to continue these for sharing information and supporting each other in a relaxed environment.

We have also managed to maintain a workable bank balance, which is enabling us to carry on providing the petrol voucher scheme, welfare requests, and equipment needed within the Nelson Marlborough region.

The branch is thankful to Pub Charity which enabled six people to attend the National Conference and gain some much appreciated education and networking with others around New Zealand. The Richmond Lions Club have also been extremely generous with a \$1000 donation and the offer to assist us with Awareness Week.....whew we won't be alone!

Unfortunately, with lousy Christmas Eve weather cherry sales were down but topped up by the Field family whom we are extremely grateful to for donating the time and cherries. The bad weather was to strike again with another new fundraising attempt at the Apple Fair but at least attempts are being made to get the awareness of CF out into the community with the hope of a little more \$\$ in the bank.

Overall this year has highlighted for me, that although committee meetings are few and far between, it is working for all those involved and addressing the needs of those in the region.

Rebecca Colley, Nelson Chairperson

CANTERBURY

This year we have had few changes within the Canterbury Branch. We have a solid committee of eight people who all work very hard for the community.

We were proactive this year and signed up with Volunteer Canterbury for help with some of our fundraisers, sadly this really didn't work for us, so we continued on as usual with our friends and family in our community.

We have stuck with our same events such as our Annual Templeton Golf Tournament held in October, the two Bunnings stocktakes, selling of the Entertainment Book, sausage sizzles, school mufti-days, chocolate fish and a Theatre Production evening that Belinda Burnett our CEO put us on to. This was a very good night. It was very easy to sell tickets and ended up being quite profitable. We have now formed a good relationship with the organiser and look forward to another production to be held in the next financial year.

We have also had some very good donations through family and friends, and one of our mums who completed the Christchurch half marathon raised \$1900 through the Givealittle fundraising website.

Grant funding is harder to come by but we gratefully received funds of \$10,000 from Canterbury Community Trust.

We still provide up-to-date medical equipment, hospital café vouchers, birthday vouchers, parking, trampolines and welfare where required for our families.

Our Hanmer Holiday House is booked out most weekends and all school holidays. We still subsidise our families by offering accommodation at \$30 per night. This is an increase of \$5

due to the extra expense from our management contract through Hanmer Holiday Homes. It is good to see it being used by many families.

Melissa Skene, Canterbury Chairperson

OTAGO

CF Otago has once again had a strong year financially, once again in a large part due to Kevin Helm's efforts with fundraising. The annual street appeal raised \$17,703. This total was up on the previous year but still below 2012 due mostly to the October timing with students completing or having completed exams. It will be interesting to see how we go this year with appeal week being moved back to August.

This funding has once again allowed us to provide nebulisers, sterilisers and other equipment, Breath4CF top-ups, heating grants, and hospital vouchers to members – with most of the year's income being spent.

I am grateful to Kevin who attended the annual Chairpersons' Conference in my place while I was away in Europe. It was good to get a second opinion on the value of the Conference and good that Otago could still be represented.

I attended the annual CF Conference and was impressed by the quality of the keynote speaker. I also came away with quite a bit for information that was new to me. I was very pleased that National managed to get a grant to have the conference webcast. I feel this is very important if the conferences are going to remain relevant with the current infection control policies. The video of the sessions is available on the CFNZ website and I would urge members to take a look at anything they feel is relevant to them.

It is pleasing that we now have the foundation of a fundraising subcommittee established. I hope that this has helped take some organisational weight off Kevin's shoulders and I'm looking forward to seeing how appeal week goes this year. This is by far the most important work done on behalf of members and we could still use more hands particularly for publicity so I would urge members to step forward and volunteer to help.

The general interest and participation by members in committee meetings has again been disappointing this year, with only the rare meeting having more than the three key committee members.

I would like to extend a big thank you to Jeremy for all his work in his dual role of secretary/treasurer. I appreciate it is not a small task and his work not only takes a load off my shoulders but is vital to the smooth running of the branch.

Julian Cox, Otago Chairperson

SOUTHLAND

This is quite a difficult report to write as no meetings were held during the year and sadly it may well be the last report from this branch.

Southland Branch is a bit at a crossroads at present as to whether it winds up and/or amalgamates with another branch (Otago). At present, we only have one active Adult with CF living in Southland. The other members are now either overseas or living in more remote areas – Wanaka, Cromwell and Queenstown, and again are not active members. Hence the reason that only three people, other than the Chairperson and Secretary, attended the last meeting.

In addition, after saying so for the last five years, the Chairperson and Secretary are now stepping down after more than 30 years of acting in this capacity.

The fact that no meetings were held has not prohibited assistance being given to those CF people in need as this has all been done without the need for a meeting or assistance from National Office. We have been fortunate that funding accumulated over the years has enabled us to do this.

An AGM is to be called in the near future where hopefully some more members can attend to further discuss the future of the Southland Branch.

Jim Phair, Southland Chairperson

Special Events Photo Gallery



The CFNZ National Conference in May 2015 was a big success with more than 100 people attending. We were also fortunate to get a grant to livestream it over the internet which was watched by an estimated 350 people.



Tasman Insulation Marketing Manager Alison Roberts presented Vaughan Somerville with his Mark Ashford Scholarship at a presentation held at the Auckland Office...



...which was declared open for business last year. The new premises shared with the Auckland Branch is in Grafton, opposite Auckland Hospital.



The Wellington Xmas Tree Festival was so successful getting businesses to decorate a tree and well known artists and New Zealanders to design a bauble (like the one here by Steph Woodman), that the Wellington Branch will be doing it all again this year.



Charity Cricket in Christchurch was a good day and an even better result - raising \$22,000 for CFNZ. Thanks again to the Crusaders Rugby team for stepping up to the wickets.



Casino Night was a gamble that paid off for Hawkes Bay Branch which took the winning hand of over \$10,000 funds raised



Challenge Wanaka in February this year attracted some amazing athletes and awesome teams - like Hobbits on Fire pictured here.

Acknowledgements



An extra big thank you to Choice Hotels and KiwiFirst! Their support has helped us enormously and they continually display a real and genuine empathy with CFNZ. We look forward to a longstanding relationship with them both to raise funds and awareness of Cystic Fibrosis throughout New Zealand.

Our work is only possible with the help of many, and those listed below are but a few of our amazing supporters. Their financial support is vital to our existence and CFNZ gratefully acknowledge them.

ASB Community Trust

BA Lewis Charitable Trust

BOC Gases

Canterbury District Health Board

Challenge Wanaka

Choice Hotels Australasia

Cleantastic Commercial Cleaning NZ

Dominos Pizza

Four Winds Foundation

Infinity Foundation

Kindercare Learning Centres

KiwiFirst

Lions Clubs of New Zealand

Mainland Foundation

Mediaworks

Ministry of Health

NZ Lottery Grants Board

Noel Leeming Group

NZ Community Trust

Tasman Insulation (Pink Batts)

Priority Partnerships

PubCharity

Rotary Clubs of New Zealand

Shares in Life Foundation

LJ Hooker Geraldine

La Roche Design

Linux Australia

Lion Foundation

Stewart Charitable Trust

Toyota NZ

Zoom Group

CFNZ Branches

CF Auckland

CF Hawkes Bay

All CFNZ Branches contributed to the National Raffle prize pool

Pharmaceuticals

Breathing & Medical Ltd

EBOS Healthcare

Mylan

Pharmaco (NZ) Ltd

Charity Cricket Sponsors

ASB Bank (Canterbury)

Bealey Dental

Canterbury Crusaders

Christchurch Boys High School

Christchurch Casino

Christchurch Northwest Kiwanis

CocaCola Amatil (NZ) Ltd

DB Breweries

Dilmah New Zealand

Fitting Room

Hellers Ltd

Linelle Stacy Artist

Rangoon Ruby

St John

Sugarhorse

The Rock

Working Style

Financial Statements

Year ended 30 June 2015

CYSTIC FIBROSIS ASSN OF N.Z. (INC)

FINANCIAL STATEMENTS
FOR THE YEAR ENDED 30TH JUNE 2015

Peter Davidson
& ASSOCIATES
CHARTERED ACCOUNTANTS

Contents

Page:

1	Trust Directory
2-3	Statement of Financial Performance
4	Statement of Movements in Equity
5	Statement of Financial Position
6-9	Notes to the Financial Statements
10	Schedule of Plant Property and Equipment (Depreciation Schedule)
11	Auditors' Report

CYSTIC FIBROSIS ASSN OF N.Z. (INC)

TRUST DIRECTORY
FOR THE YEAR ENDED 30TH JUNE 2015

Peter Davidson
& ASSOCIATES
CHARTERED ACCOUNTANTS

Date of Formation: 16 December 1968

Charitable Trust
Incorporation Number: 211724

Objects: To fund research and support for
people with Cystic Fibrosis.

Auditors: Peter Davidson & Associates
25a Horotane Valley Road
CHRISTCHURCH

Bankers: ASB
Private Bag 39 888
Auckland

CYSTIC FIBROSIS ASSN OF N.Z. (INC)

STATEMENT OF FINANCIAL PERFORMANCE
FOR THE YEAR ENDED 30TH JUNE 2015

Peter Davidson
& ASSOCIATES
CHARTERED ACCOUNTANTS

	<u>2015</u>	<u>2014</u>
<u>INCOME</u>		
Individual Donations & Bequests	74,004	54,964
Sponsorships & Grants (note 11)	137,282	224,443
Grants ex Branches	25,400	44,292
National Fundraising (notes 12)	39,223	77,651
Interest - Chris Howlett Fund	19,985	22,948
Interest - General	3,938	4,349
Dividends - Chris Howlett	8,878	8,002
Dividends - Rangitira	18,800	18,400
MOH Contract Income	86,155	75,000
Breath 4CF Interest Income	8,543	7,390
Breath 4CF Fundraising	50,268	60,902
KiwiFirst Public Donations (note 6)	224,369	-
Australasian Conference Grants	-	142,590
Other Income	7,382	8,449
	<u>704,227</u>	<u>749,380</u>
<u>OPERATING EXPENSES</u>		
Other Grants	2,804	333
Hospital Allowances & Prescription Refunds	6,740	14,620
National Voucher Scheme	7,558	7,100
Funeral Grants	6,000	8,000
Medical Information & Advice	1,320	1,130
Tertiary Education Grants	21,626	29,343
Chris Howlett Fund Endowment Payments	3,400	-
CHEF - Other expenses	1,706	1,728
Transplant Grants incl Vouchers	6,888	5,635
Achievement Awards	6,593	4,787
Advertising, Promotion, Public Relations & Lobbying	6,906	11,324
KiwiFirst Campaign Costs (note 6)	72,679	-
Brochures & Publications (note 6)	72,679	-
CF - Newsletter	14,403	19,890
Education Programmes	4,368	5,262
Breath4CF Grants	64,409	70,941
Breath 4CF Other Expenses	6,435	7,331
Equipment & Laptops for PWCF	(123)	13,151
Field Worker Costs	134,400	121,862
Conference Expenses	21,333	22,080
Australasian Conference Expenses	-	125,497
	<u>462,124</u>	<u>470,014</u>
<u>SERVICE PROVISION - ADMINISTRATION SUPPORT</u>	462,124	470,014
Administration	170,093	155,973
Service Support Direct Costs	6,397	608
	<u>176,490</u>	<u>156,581</u>

These financial statements should be read
subject to the notes annexed hereto.

CYSTIC FIBROSIS ASSN OF N.Z. (INC)

FOR THE YEAR ENDED 30TH JUNE 2015

	<u>2015</u>	<u>2014</u>
<u>ADMINISTRATIVE EXPENSES</u>		
Staff Salaries	78,610	73,467
Staff Travel	3,277	2,185
Motor Vehicle Costs	1,300	3,298
Other Staff Costs	1,423	5,846
Office - Rent/Electricity/IT		
Support	21,808	12,562
Printing , Stationery &		
Photocopying	2,051	1,767
Postage	1,619	1,884
Telephone & Tolls	3,292	3,019
Subscriptions	1,046	1,035
Accounting Fees	2,750	2,650
Audit Fees	2,400	2,344
Board Expenses	10,539	11,129
General	10,250	7,674
	<u>140,365</u>	<u>128,860</u>
<u>DEPRECIATION</u>		
Depreciation	6,274	5,369
Loss on Sale of Assets	42	195
	<u>6,316</u>	<u>5,564</u>
<u>TOTAL EXPENSES</u>	<u>785,295</u>	<u>761,019</u>
<u>OPERATING (DEFICIT)/ SURPLUS</u>	<u>(81,068)</u>	<u>(11,639)</u>
<u>SUNDRY INCOME</u>		
Branch operating results (deficit) (note 7)	(9,723)	15,169
<u>NET (DEFICIT)/ SURPLUS FOR YEAR</u>	<u>(90,791)</u>	<u>3,530</u>

These financial statements should be read
subject to the notes annexed hereto.

CYSTIC FIBROSIS ASSN OF N.Z. (INC)

FOR THE YEAR ENDED 30TH JUNE 2015

Peter Davidson
& ASSOCIATES
CHARTERED ACCOUNTANTS

	<u>2015</u>	<u>2014</u>
<u>STATEMENT OF MOVEMENTS IN EQUITY</u>		
Net (Deficit)/Surplus for Year	(90,794)	3,532
Trust Equity at 1/7/2014	1,640,667	1,620,357
First NZ Capital Portfolio Valuation Fluctuation - Unrealised	318,389	16,778
	<u>1,868,262</u>	<u>1,640,667</u>

Comprised:

Accumulated Funds	1,084,685	883,794
Chris Howlett Endowment Fund (note10)	630,658	584,651
Breath 4 cf Physical Equipment Fund (Note13)	152,919	172,222
Total Equity as at 30/6/2015	1,868,262	1,640,667

CYSTIC FIBROSIS ASSN OF N.Z. (INC)

STATEMENT OF FINANCIAL POSITION
FOR THE YEAR ENDED 30TH JUNE 2015

Peter Davidson
& ASSOCIATES
CHARTERED ACCOUNTANTS

	<u>2015</u>	<u>2014</u>
<u>TRUST EQUITY</u>	1,868,262	1,640,667
	<u>1,868,262</u>	<u>1,640,667</u>
<u>Represented By:</u>		
<u>CURRENT ASSETS</u>		
Cash on Hand	150	150
Cheque a/c	104,973	77,310
Breath 4CF Cheque A/c	24,387	4,928
Term Deposits (note 8)	590	40,161
Scholarship Funds (note 8)	52,239	50,273
Accounts Receivable & Accruals	63,962	13,123
Stock on Hand - Vouchers	5,636	6,383
Goods & Services Tax Holding Account	7,149	3,476
	<u>259,086</u>	<u>195,804</u>
<u>INVESTMENTS</u>		
Long Term Investments (note 9)	260,400	75,600
Breath 4CF Portfolio	128,533	167,294
Chris Howlett Endowment Fund		
Assets- note 10 & 13	630,658	584,651
Branch Assets (note 7)	730,033	739,756
	<u>1,749,624</u>	<u>1,567,301</u>
<u>PROPERTY PLANT AND EQUIPMENT</u> As per Schedule	9,292	11,436
	<u>2,018,002</u>	<u>1,774,541</u>
<u>TOTAL ASSETS</u>		
<u>CURRENT LIABILITIES</u>		
Accounts Payable & Accruals	58,224	48,266
Staff Entitlements	11,450	9,209
Tertiary Assistance Liability	62,232	46,286
Unexpended Grants	17,834	30,113
	<u>149,740</u>	<u>133,874</u>
<u>TOTAL LIABILITIES</u>	149,740	133,874
<u>NET ASSETS</u>	<u>1,868,262</u>	<u>1,640,667</u>

Bennett

Julian Bennett
4/9/2015

These financial statements should be read
subject to the notes annexed hereto.

1. STATEMENT OF ACCOUNTING POLICIES

Reporting Entity

The reporting entity is a charitable trust incorporated under the Charitable Trusts Act 1957. The financial statements of the entity have been prepared in accordance with generally accepted accounting practice in New Zealand.

The financial statements comprise statements of: accounting policies; financial performance; movements in equity; financial position; as well as the notes to these statements contained in this annual report.

Measurement Base

Other than where specifically stated

The measurement base adopted is that of historical cost. Accrual accounting is used to recognise expenses and revenues when they occur.

SPECIFIC ACCOUNTING POLICIES

Differential reporting

Cystic Fibrosis Association Incorporated qualifies for differential reporting exemptions as it satisfies the public accountability and size criteria as set out in the Framework for Differential Reporting. All available differential reporting exemptions allowed under the framework for differential reporting have been adopted.

Depreciation

Depreciation has been charged using D V rates from 16% to 50%.

Accounts Receivable

Accounts receivable are recorded at net realisable value.

Investments

The investment in First NZ Capital Portfolio is valued at market value as at balance date with any unrealised change in value recorded as a fluctuation reserve change.

Other Share Investments are also recorded at their market value as at balance date with the fluctuation recorded as above.

Property Plant and Equipment

Property Plant and Equipment is recorded at cost less accumulated depreciation.

Unexpended Project Grants

Unexpended Project Grants are recorded as a current liability at balance date.

Goods and Services Tax

The financial statements have been prepared stating all income and expenditure items exclusive of GST.

Taxation

The Trust is a registered charity and is not liable to pay income tax.

Branch Assets

The net assets of each Branch of the CFANZ as at 30 June 2015 are included in financial statements as at that date.

Changes in Accounting Policies

There has been one change in accounting policies. The 40,000 Rangitira Limited shares are now recorded at market value rather than at their original value at the time of gifting. There has been an unrealised fluctuation gain recorded in the 2015 year of \$296,000. All other policies has been applied on bases consistent with those used in prior years.

2. Capital Commitments

There were no capital commitments at 30.6.2015 2014 (Nil)

3. Contingent Liabilities and Commitments

There were no contingent liabilities or commitments as at 30.6.2015 2014 (Nil).

4. Related Party Transactions

The Share in Life Trust is a related entity. Transactions are carried out under standard business terms and conditions at an arms length price. It is accounted for separately.

5. Lease Commitments

As at balance date the Association has future operating lease commitments as follows:

	expiry date	within 12 months	greater than 12 months
- Vehicle 1 Lease	Sept 2015	871	0
- Vehicle 2 Lease	Aug 2017	3,270	3,543
- Premises rental Ricc	Nov 2016	22,780	9,492
- Premises rental Auckland	July 2017	28,160	28,160
		-----	-----
TOTAL		55,081	41,195

6. Kiwifirst Income & Expenditure

KiwiFirst income records all monies collected from the public, which are forwarded directly to Cystic Fibrosis New Zealand in their entirety.

Campaign Costs and Brochures & Publications records all direct marketing costs and the costs of preparation, printing and distribution of the Cystic Fibrosis information brochure produced to inform the public about CF.

7. Subsequent Events

The Trustees are not aware of any matter or circumstance since the end of the financial year, not otherwise mentioned within this report, that has significantly affected or may significantly affect the operations of the Association, the results of those operations, or the state of affairs of the Association

CYSTIC FIBROSIS ASSN OF N.Z. (INC)

Financial Statements

For the year ended 30 June 2015

7 Branch operating results	<u>2015</u>	<u>2014</u>
Surplus/ (Deficit) after contributions to National Association		
Northland	9,418	4,906
Auckland	-31,015	9,309
Bay of Plenty	26,505	1,921
Waikato	594	3,424
Hawkes Bay	-15,339	-27,915
Taranaki	-1,571	-812
Central Districts	-5,046	376
Wellington	7,817	-421
Nelson	3,876	3,737
Canterbury	-6,012	23,226
Otago	4,353	7,982
Southland	-3,303	-10,565
Total Branch Surplus/(Deficit)	-9,723	15,168

Branch Assets

Northland	35,966	26,548
Auckland	148,744	179,759
Bay of Plenty	41,239	14,733
Waikato	18,364	17,770
Hawkes Bay	115,153	130,492
Taranaki	27,636	29,207
Central Districts	12,338	17,384
Wellington	51,377	43,560
Nelson	11,892	8,016
Canterbury	186,875	192,888
Otago	64,010	59,657
Southland	16,440	19,743
Total Branch Assets	730,033	739,757

8 Short Term Investments

ANZ	0	40,012
Rabobank	590	149
Total	590	40,161
Scholarships Fund - Rabobank	52,239	0

9 Long Term Investments

Comprises: 10,000 Ordinary A Rangatira Ltd Shares and 18,000 Ordinary B Rangatira Ltd Shares @ \$9.30. (market value 30/6/2014 \$340,000 for the full holding of 10,000 A share and 30,000 B shares)	260,400	75,600
During the 2015 financial year 12,000 B shares were transferred to the Chris Howlett Fund. The market value of these as at 30/6/2015 @ \$9.30 was \$111,600.		

CYSTIC FIBROSIS ASSN OF N.Z. (INC)

Financial Statements

For the year ended 30 June 2015

	<u>2015</u>	<u>2014</u>
10 Chris Howlett Endowment Fund		
Opening Balance	584,651	536,874
Plus net income earned	28,863	30,950
Less administration costs	-1,706	-1,728
Endowment Grants paid	-3,400	0
Plus unrealised revaluation gain	22,250	18,555
Closing Balance	<u>630,658</u>	<u>584,651</u>
11 Donations, Sponsorships and Grants		
Pub Charity Grant	9,574	10,000
NZ Lottery Grants Board	0	39,433
N Z Community Trust	10,000	10,000
Other	0	6,774
ASB Community Trust	15,000	25,000
Lottery Grants Board	21,700	0
Four Winds Foundation	3,000	0
Mainland Foundation	5,000	4,754
Perpetual Trust - 2013 F Thompson	0	2,000
Share in Life Foundation	23,000	20,000
Guardian Trust - 2013 Ted and Molly Carr	0	30,000
Plus/ Less Unexpended Grants 2014	28,600	-28,600
Less Unexpended Grants 2015	-17,834	
Sponsorship - Boehringer Ingelheim	0	40,262
Roche	0	5,000
Nomads Golf Club	0	10,870
Infinity	10,000	12,500
Lion Foundation	13,000	2,400
Stewart Trust	0	2,000
BA Lewis Charitable Trust	3,243	5,000
Pelorus Trust	0	2,000
Mylan/ Abbott	10,000	25,050
Pink Batts - Mark Ashford Memorial Scholarship	3,000	
	<u>137,282</u>	<u>224,443</u>
Plus non cash sponsorships		
Goods in kind for events such as: Charity Cricket		
CFANZ Awareness Week and National Raffle:		
Major Sponsors:		
Radioworks Network		
Choice Hotels Australasia		
TOTAL	66,224	264,939

12 National Fundraising

Comprising the following which are net of expenses incurred:

National Raffle	10,205	18,830
Direct Mail	9,577	0
Charity Cricket Gala Day	11,778	15,428
Other	7,663	43,394
	<u>39,223</u>	<u>77,652</u>

13 Breath 4 CF Physical Equipment Fund

Comprises net income arising from the fundraising activities undertaken in conjunction with the Taupo Ironman multisport event which is utilised for specific needs.

Opening balance	167,294	180,095
Plus net Income	58,811	66,866
less payments for equipment	-64,409	-70,941
less transfer to CFANZ retained earnings -admin current year	-6,434	-6,949
Plus unrealised revaluation (loss)/gain	-2,343	3,151
Closing Balance	<u>152,919</u>	<u>172,222</u>

Comprised:

Cheque Account	4,366	4,928
FNZC Portfolio	128,533	167,294
Rabobank Funds	20,020	0
Total	<u>152,919</u>	<u>172,222</u>

INDEPENDENT AUDITOR'S REPORT

To the members of The Cystic Fibrosis Association of New Zealand Incorporated

We have audited the financial statements of The Cystic Fibrosis Association of New Zealand Incorporated as attached which comprise the balance sheet as at June 30 2015, the income statement and the statement of changes in equity for the year then ended and a summary of significant accounting policies and other explanatory information.

Board of Management's Responsibility for the Financial Statements

The Board of Management is responsible for the preparation and fair presentation of these financial statements in accordance with generally accepted accounting practice in New Zealand and for such internal control as the trustees determine is necessary to enable the preparation of financial statements that are free from material misstatement, whether due to fraud or error.

Auditor's Responsibility

Our responsibility is to express an opinion on these financial statements based on conducting the audit in accordance with International Standards on Auditing (New Zealand). Those standards require that we comply with ethical requirements and plan and perform the audit to obtain reasonable assurance about whether the financial statements are free from material misstatement.

An audit involves performing procedures to obtain evidence about the amounts and disclosures in the financial statements. The procedures selected depend on the auditor's judgement, including the assessment of the risks of material misstatement of the financial statements, whether due to fraud or error. In making those risk assessments; the auditor considers internal control relevant to the entity's preparation and fair presentation of the circumstances, but not for the purpose of expressing an opinion on the effectiveness of the entity's internal control. An audit also includes evaluating the appropriateness of accounting policies used and the reasonableness of accounting estimates, as well as evaluating the overall presentation of the financial statements.

We believe that the audit evidence we have obtained is sufficient and appropriate to provide a basis for our qualified audit opinion.

We assisted the Association in the formatting of the financial report, Other than this, we have no relationship with, or interests in, The Cystic Fibrosis Association of New Zealand Incorporated.

Basis for Qualified Opinion

In common with other organisations of similar nature, control over some income items, prior to entry in the books of account is limited, and there are no practical audit procedures to determine the effect of this limited control.

We have also relied on the financial statements forwarded from branches of the Association only some of which have been audited and have been unable to complete any detailed work on those results.

Qualified Opinion

In our opinion, except for the possible effects of the matters described in The Basis for Qualified Opinion paragraph, the financial statements as attached:

- Comply with generally accepted accounting practice in New Zealand;
- Give a true and fair view of the financial position of Cystic Fibrosis Association of New Zealand Incorporated as at June 30, 2015 and of its financial performance for the year then ended.

Our audit report was completed on 12 September 2015 and our qualified opinion is expressed at that date.

Peter Davidson & Associates

CHARTERED ACCOUNTANTS





www.cfnz.org.nz

The Cystic Fibrosis Association of New Zealand

PO Box 8241, Riccarton, Christchurch 8440